

PORTABLE WATER METERS

It's Simple and Convenient!



OUC 

The *Reliable One*®

www.ouc.com

OS-1806V1

Request a PORTABLE WATER METER:

OUC provides portable water meter rentals for construction and other temporary situations in the OUC service area where normal service is not reasonable.

The portable meter measures the amount of water used, which is then billed to the customer on a monthly basis. Portable meters on hydrants are equipped with reduced pressure backflow prevention devices that are to remain installed at all times. These are required to protect the water system from contamination. If the portable meter will be mounted on a truck, the backflow prevention assembly will not be provided, since the trucks are required to have an approved air gap installed and inspected by OUC within 15 days of pick up.

GETTING STARTED:

1. Request a portable water meter at www.ouc.com/MeterRequest and email completed form to commercialsvcs@ouc.com or fax it to **407-423-9129**. You will receive a confirmation email within 24–48 hours.
2. Once the confirmation email is received, submit deposit to OUC by making your payment at www.ouc.com/waystopay or **407-423-9018**.
3. Bring a copy of the email confirmation with the completed request form and a valid Florida driver's license to the OUC Water Meter Shop for meter pickup. **Hours of operation: 7:30 a.m. to 2:30 p.m. M-F. OUC's Water Meter Shop is located at 3800 Gardenia Avenue, Orlando, FL 32839.**
4. Portable must be picked up within 10 business days and the deposit already paid.
5. Follow instructions on back of brochure to install meter.

ANNUAL INSPECTION

All customers are required to submit meter(s) to OUC for a yearly inspection. To schedule call **407-423-9100 x40919**. **Warning:** Failure to report for yearly inspection will result in a revocation of portable meter service. It is considered a violation of FDEP Rule #62-555.360 and is subject to a non-refundable penalty of \$140.

Descriptions of WATER METERS:

Hydrant Meter:

Most customers prefer this meter.

2" Portable

Output: 250gpm

Any application where water is needed.



Water Truck Meter:

2" Truck Mount

Output: 250gpm

Permanently installed on large tanker trucks.

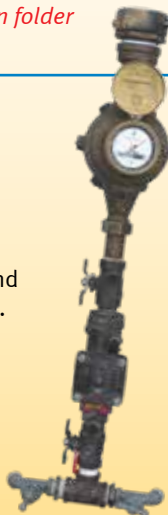
The customer is required to install the meter on the truck, have an **approved air gap** and bring truck back to us within 15 days for inspection
*See example included in folder

1" Meter:

1" Small Meter

Output: 40gpm

Mostly for small pressure washers and comes with two garden hose spigots.



PORTABLE METER RATES & FEES:

Refundable Security Deposit:	\$2,000 per meter
Non-refundable Connection Charge	\$90 per meter
Minimum Service Charge	\$78.20 monthly
Failure to Report a Monthly Reading	\$140 per monthly occurrence
Tampering/Damage	\$130 minimum per occurrence
Failure to Submit Meter for Yearly Inspection	\$140 per occurrence

REPORT YOUR MONTHLY READING:

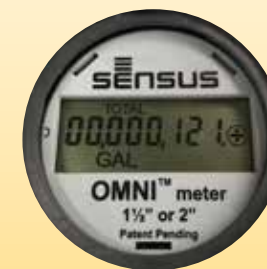
Go online to www.ouc.com/portablemeter to report your monthly portable water meter readings. Meter readings must be reported online between the 20th and 25th of each month for proper billing. **NOTE: Failure to report monthly meter readings between the 20th and 25th of each month will result in a non-refundable penalty of \$140 per occurrence.**

HOW TO READ YOUR PORTABLE WATER METER:

DIGITAL:

When reading the digital portable meter, read from left to right excluding the last three numbers.

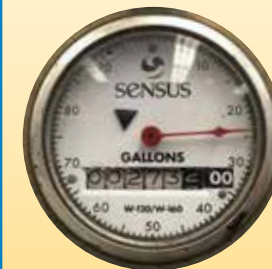
The below example would read: 00000



DIAL:

When reading the dial portable meter, only report the black digits on the white dials.

The below example would read: 273



OPERATION & INSTALLATION FOR PORTABLE METER ASSEMBLIES



Secure and transport meters safely; never leave unattended. Use OUC-approved fire hydrant wrenches (available in OUC's Water Meter Shop). **FLUSH FIRE HYDRANT UNTIL WATER IS CLEAR BEFORE ATTACHING PORTABLE WATER METER.** Install assembly in vertical upright position. Operate in horizontal position (with dial facing up).

HYDRANT PORTABLE METERS

To Install:

1. Attach female end of fire hose to the 2 1/2" port of the hydrant.
2. Install rest of port caps in tightened position.
3. Open ball valve.
4. Slowly open hydrant and close ball valve on outlet end of assembly.
5. Attach customer hose to outlet end of assembly.
6. Keep hydrant fully open while assembly is in use. To adjust flow, slowly close ball valve on outlet end.

To Shut Down:

1. Close hydrant valve and open ball valve to bleed pressure from backflow device.
2. Carefully remove hose from hydrant to reduce pressure.
3. Disconnect and return female end to the dolly.
4. Return dolly to upright position and install port cap back on hydrant.



The Reliable One®

Orlando Utilities Commission

100 West Anderson Street Orlando, Florida 32801

www.ouc.com