



Tree Trimming...

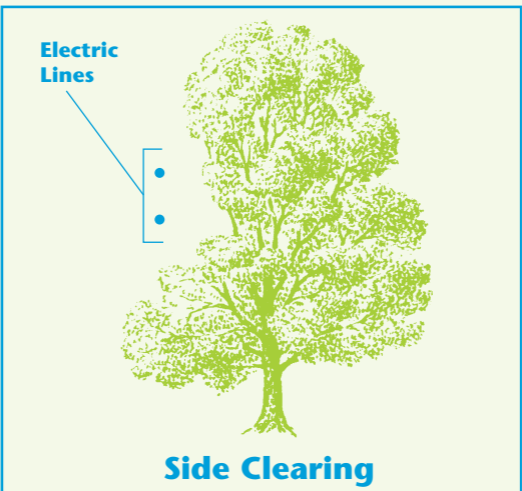
Keeping
Neighborhoods

Safe and Beautiful

OU Customer
Connection

Trimming Trees For Better, Safer Service

- OUC estimates that 20% of all outages are caused by falling trees or limbs that come in contact with electrical lines.
- Falling trees and limbs can cause wires to break or sag to the ground, presenting a very real danger to motorists and pedestrians.
- Overgrown trees or limbs near power lines pose a danger to unsuspecting children who could come in contact with a live line while climbing a tree.
- The shape, size and growth rate of trees affect how often they need to be trimmed. Generally we try to create 10 feet of clearance alongside and below, and no branches above our lines.
- Directional pruning allows us to train the tree to grow away from power lines by removing only the branches that come in contact with the wires. By selectively trimming the tree's branches, we can retain much of the tree's natural crown.
- It may be necessary to remove an old/dead tree that has become a hazard to the public or our electrical system. You will be notified if the tree is to be removed.

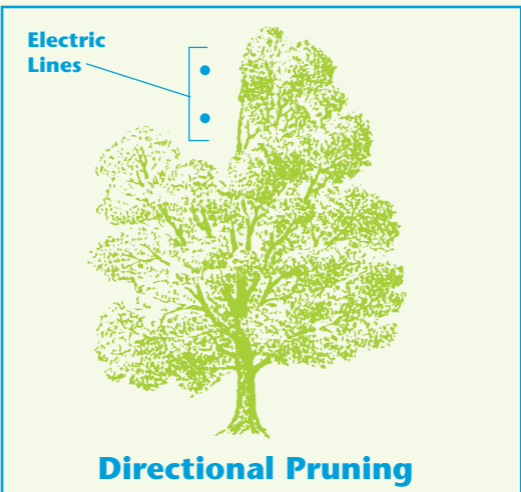


Trimming Is A Job For Professionals

- OUC trims trees along our distribution lines on a regular maintenance cycle employing trained, highly skilled professionals who use the proper tools and safety practices.
- If you notice a tree interfering with power lines, please call use immediately at **407.423.9018**.
- Never attempt to trim a tree near electrical wires yourself.

Customer Notification

- OUC will notify you and your neighbors two or three weeks in advance before work begins in your area by leaving a notice on your front door knob.
- As a further service — and at no cost to you — OUC will trim trees that encroach on the service entrance cable to your home. If you'd like us to perform this work, please call so that we can schedule this service while we are in your neighborhood.
- Wood chips generated by the tree trimmers are available to you at no charge. If you want to receive this non-landscape quality wood chip product, please call us at **407.423.9018**.



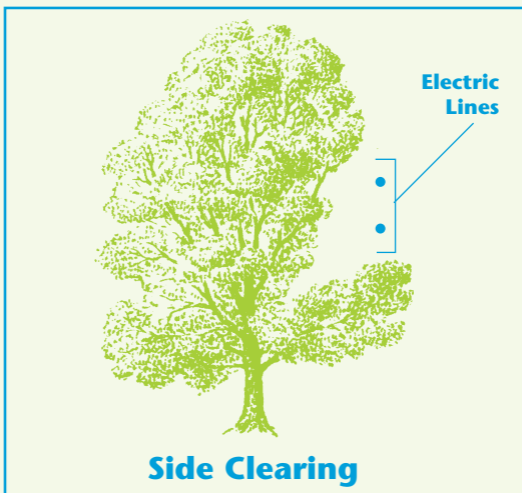
Choosing & Planting Trees

It makes good sense to think ahead before you plant a tree. The tree you plant will make out much better away from overhead lines. If your landscaping plans call for a tree near electric lines, choose a low-growing variety. Fast-growing trees should be planted a minimum of 20 feet away from power lines. Anytime you plant, also remember to check for underground power, cable and utility lines. Also, please avoid planting trees, shrubs or vines close to pad-mounted transformers. For questions about landscaping around pad-mounted transformers, please call us at **407.423.9018**.

Here are some trees that are ideal for planting beneath power lines and most are available at your local nursery or garden center:

- Scrub Hickory
- Weeping Bottlebrush
- Crepe Myrtle
- Wax Myrtle

If you would like further help choosing a tree, contact your local nursery or garden center.



Keeping Branches Away From Power Lines

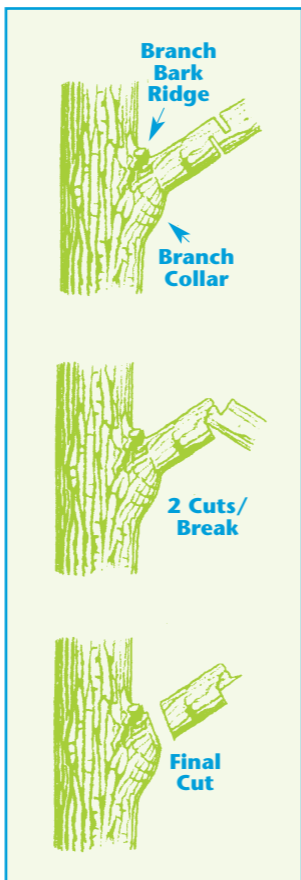
OUC has a tradition of providing safe, reliable power while doing our best to keep Orlando the “City Beautiful.” The beauty of trees adds to every street and neighborhood, but when branches and limbs grow too near power lines, trouble grows right along with them.

That’s why OUC has formed an alliance with the Davey Expert Tree Company to provide tree trimming using the method recommended by the U.S. Forest Service and the International Society of Arboriculture. This will help prevent power outages and dangerous downed lines while promoting healthy, natural growth for our precious trees.



Approved Pruning Method

OUC uses an approved pruning method when trimming trees. This illustration shows the proper method for pruning a branch that leaves the branch collar intact.



Additional pruning information is available from the Orange County Cooperative Extension Service.



The Reliable One[®]

Orlando Utilities Commission

500 South Orange Avenue Orlando, Florida 32801

Web site: www.ouc.com